

Appendix A: Workshop Materials



Alternatives Assessment – Workshop #1
Cultural Resources Working Group
Monday, December 14, 2020
1:00 p.m. – 3:00 p.m.

Biological Resources Working Group
Tuesday, December 15, 2020
1:00 p.m. – 3:00 p.m.

Partner Working Group
Wednesday, December 16, 2020
9:00 p.m. – 11:00 a.m.

Huffman Stakeholder Group
Thursday, December 17, 2020
1:00 p.m. – 3:00 p.m.

Topic	Speaker	Discussion Tool
I. Welcome and Introductions	Joan Chaplick, MIG Jaime Matteoli, Caltrans	
II. Alternatives Analysis Process and Input	Jaime Matteoli	
III. Project Need, Purpose and History of Alternatives	Jaime Matteoli	
IV. Proposed Methodology and Criteria	Dina Potter, HNTB	Chat and Raise Hands
V. Review of Criteria by Objective	Joan Chaplick, MIG All participants	Chat and Raise Hands
VI. Level of Support for Criteria by Objective	Joan Chaplick, MIG All participants	Polling, Chat and Raise Hands
VII. Next Steps and Closing Comments	Jaime Matteoli	



LAST CHANCE GRADE

Alternatives Analysis Methodology
Workshop 1

December 2020

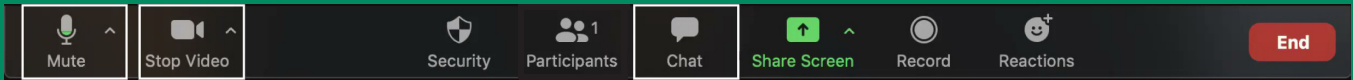


Meeting Purpose



- Get stakeholder input on the process for assessing the alternatives
- Conduct a transparent and defensible process
- In today's meeting, we will:
 - Describe the approach and methodology
 - Get your input on the criteria and performance metrics that will be used
 - Gauge the level of support for the process and the comments we have discussed

Virtual participation on Zoom



1 Audio & Video

Computer

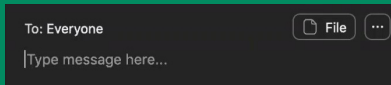
- Use the toolbar

Phone

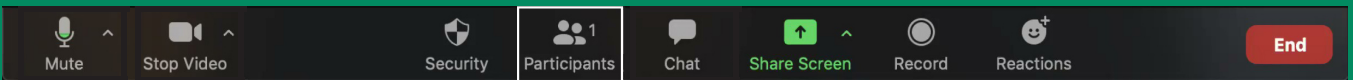
- Access dial-in number
- Use *9 to raise hand

2 Chat

- Click on the chat and type your comments and questions
- We'll take comments throughout the workshop

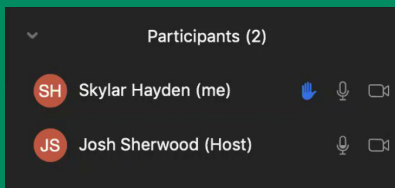


Virtual participation on Zoom



Participants

- Select icon on the toolbar to open the participants' window
- Select 'Raise Hand' button

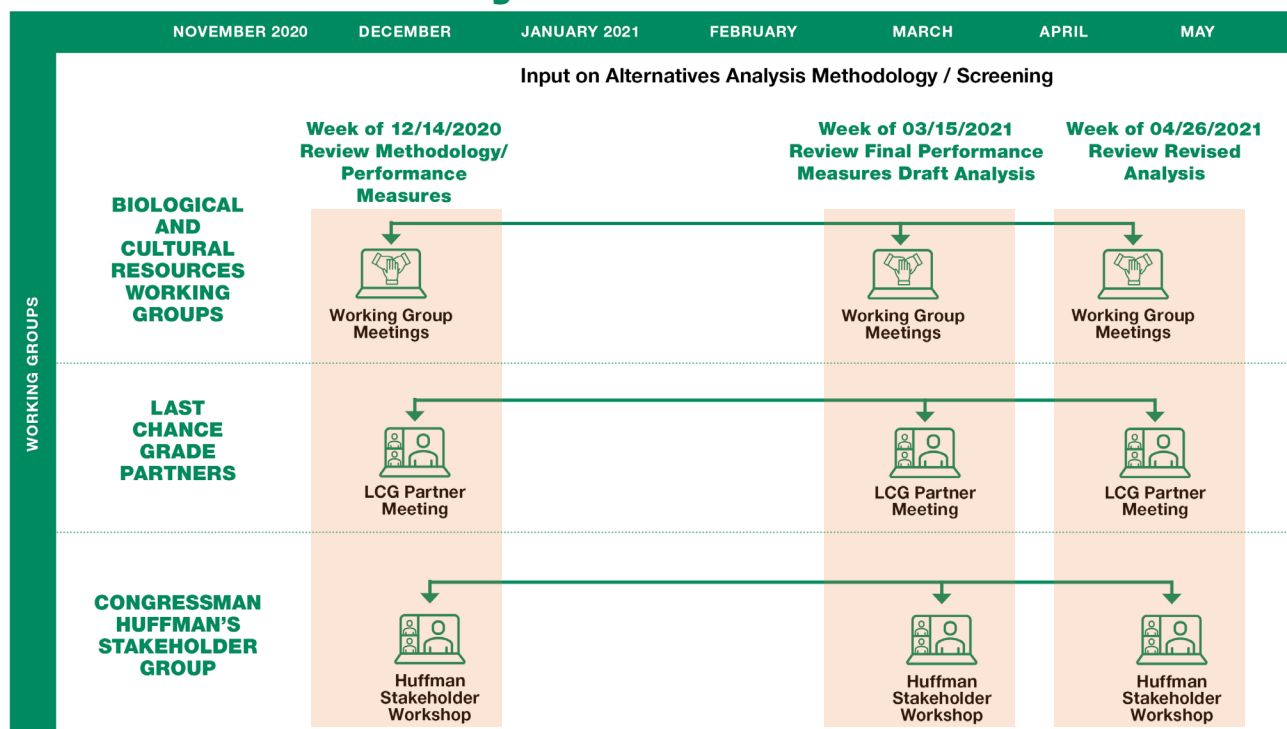


Workshop Agenda + Input Opportunities



- Welcome and Introductions
- Alternatives analysis process and input
 - *Questions via chat*
- Project need, purpose, and history of alternatives
 - *Questions via chat*
- Proposed criteria and proposed performance measures
 - *Discussion and comments via chat, with digital note taking*
- Review of criteria based on objectives
 - *Discussion and comments via chat, with digital note taking*
 - *Polling on level of agreement with proposed revisions*
- Summary and Next Steps

Alternatives Analysis Process



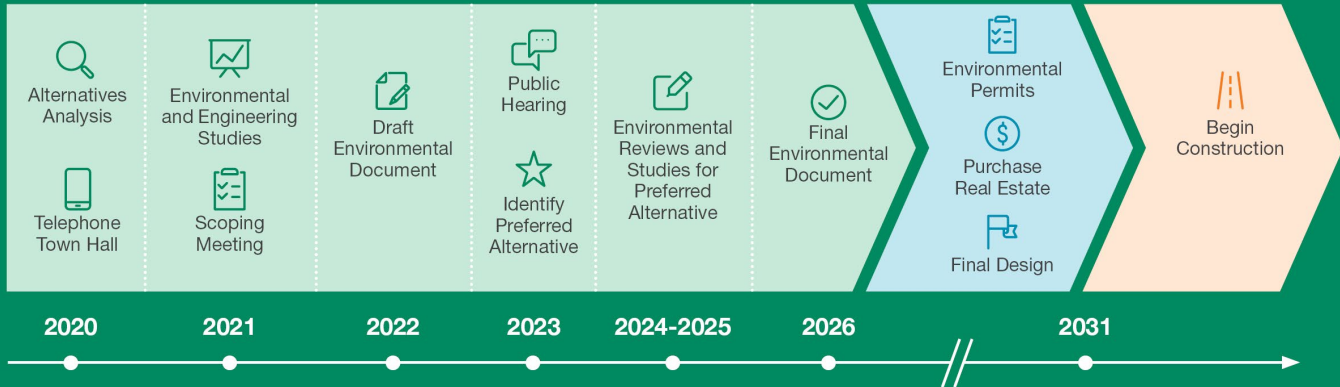
Project Timeline



ENVIRONMENTAL PHASE

DESIGN PHASE

CONSTRUCTION

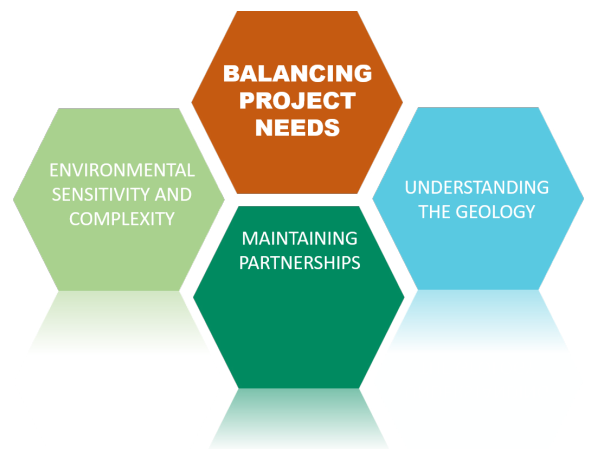


Project Need



Landslides and road failure at LCG have been an ongoing problem for decades. A long-term sustainable solution at LCG is needed for the following reasons:

- Economic ramifications of a long-term failure;
- Risk of delay/ detour to traveling public;
- Increasing maintenance costs and;
- Increase in frequency and severity of large storm events caused by climate change



Project Purpose

The purpose of this project is to develop a long-term solution to the instability and potential roadway failure at LCG.

The project will consider alternatives that:

- Provide a more **reliable connection**,
- Reduce **maintenance costs**, and
- Protect the **economy, natural resources, and cultural resources**.



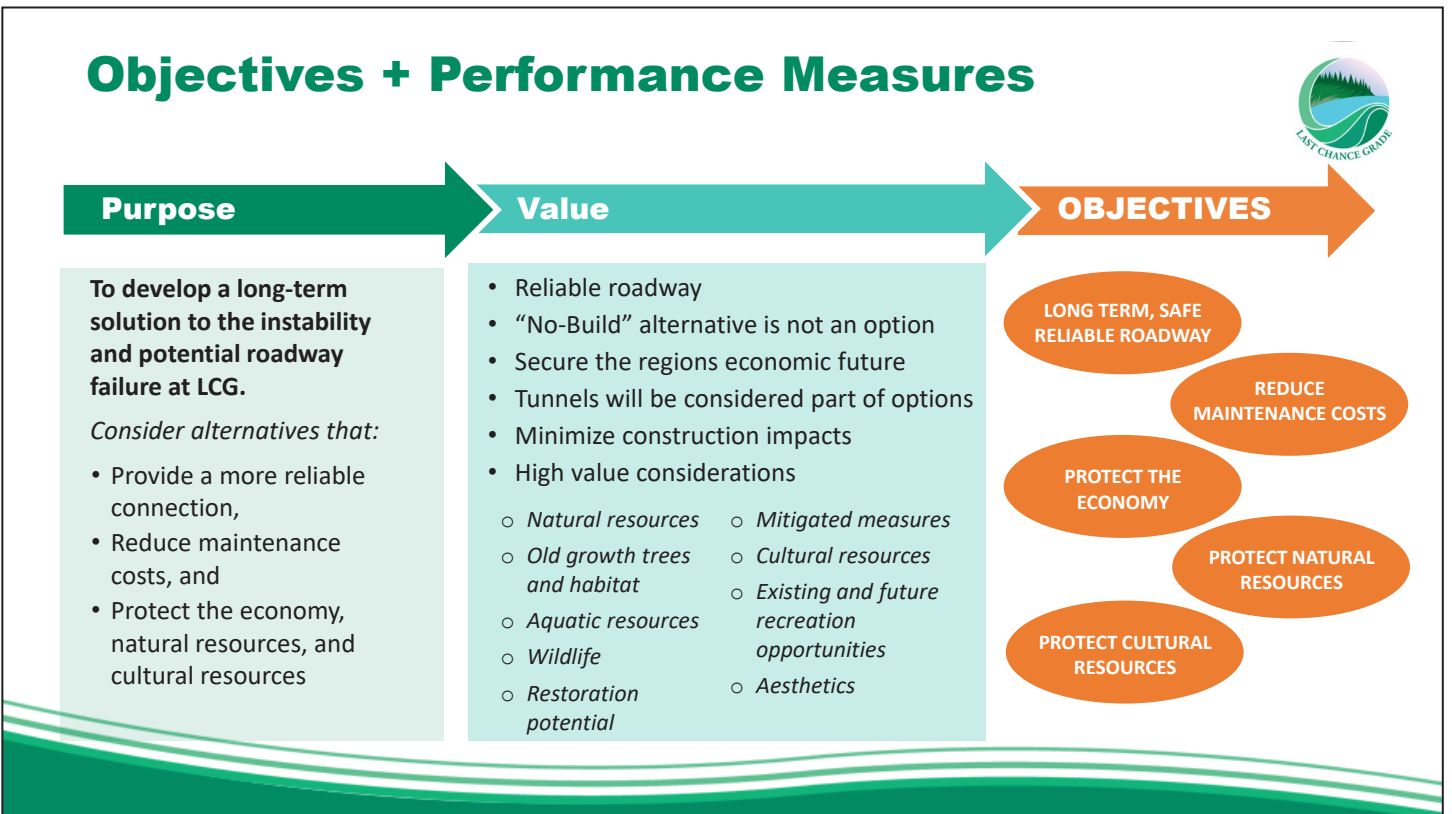
Sunday night on LCG



History of Alternatives

- 2015 Feasibility Study considered 14 alternatives and rejected eight
- 2016 Project Study Report considered six alternatives
- 2018 Risk Assessment added alternatives L and X
- 2018 Value Analysis rejected alternatives C3, C4 and C5
- 2019 Project Study Report Addendum added alternatives G1 and G2
- 2020 Seven build alternatives will be assessed and evaluated





Long-Term Safe, Reliable Roadway

Criteria	Performance Measure	How Measured
Road closure	Probability of long-term closure	Expert-based risk assessment including probability of deep ground displacement
Traffic mobility	Probability of lane reduction and mobility impact	Expert-based risk assessment including probability of unmitigable landslide activity / hydrogeological changes

Reduce Maintenance Costs

Criteria	Performance Measure	How Measured
Maintenance cost	Probability of increased maintenance costs	Expert-based risk assessment including probability of unmitigable earth movement

Protect the Economy

Criteria	Performance Measure	How Measured
Capital costs	Construction cost (millions)	Engineers' Order of Magnitude estimate
Mitigation costs	Mitigation cost range (high / medium / low)	Expert environmental estimate with historical cost data
Litigation costs	Risk of litigation (millions)	Risk based on costs of delay and level of potential controversy

Protect Natural Resources

Criteria	Performance Measure	How Measured
Trees / Forests	Old growth redwood forest (acres)	Aerials / field review information
	Mature mixed coniferous forest (acres)	
	Young growth / mixed forest (acres)	
	Other types, i.e., coastal scrub (acres)	
Habitat	Marbled murrelet habitat (acres)	Aerials / existing reports
	Marten/fisher habitat (acres)	
	Northern spotted owl habitat (acres)	
Wildlife connectivity	New habitat islands generated (acres)	Aerials
Recreational resources	Number and type of sites / trails affected	Aerials / LiDAR

Protect Cultural Resources

Criteria	Performance Measure	How Measured
Cultural resources	Expert assessment of risk	Record search and pedestrian survey

Discussion of Criteria and Performance Measures by Objective



- Review the suggested criteria and metrics for each objective

Consider the following:

- Do these criteria reflect what is valued?
- Are there any gaps or duplicates?
- Do the performance measures quantify what is important to assess this criteria?
- Should any of these be weighted much higher than others?



Discussion

Polling on Overall Methodology



- What is your level of support for the overall process that has been described today?
 - Highly supportive
 - Somewhat supportive
 - Neutral
 - Somewhat unsupportive
 - Do not support

Polling on Each Objective



- *The poll is anonymous and is not a binding vote. Its purpose is intended as a way to gauge general support for the comments that were discussed.*
- To what degree do you support the revisions as discussed?
- Levels of Support:
 - Highly supportive
 - Somewhat supportive
 - Neutral
 - Somewhat unsupportive
 - Not supportive - revisions do not address my concerns

Next Steps and Next Meeting



- Meeting format is being replicated with all four groups
- Project Team will collectively review feedback and refine the methodology accordingly
- Project Team will apply the refined methodology will be applied to the alternatives and present the results for discussion at the next meeting
- Next workshop will be scheduled during the week of March 15