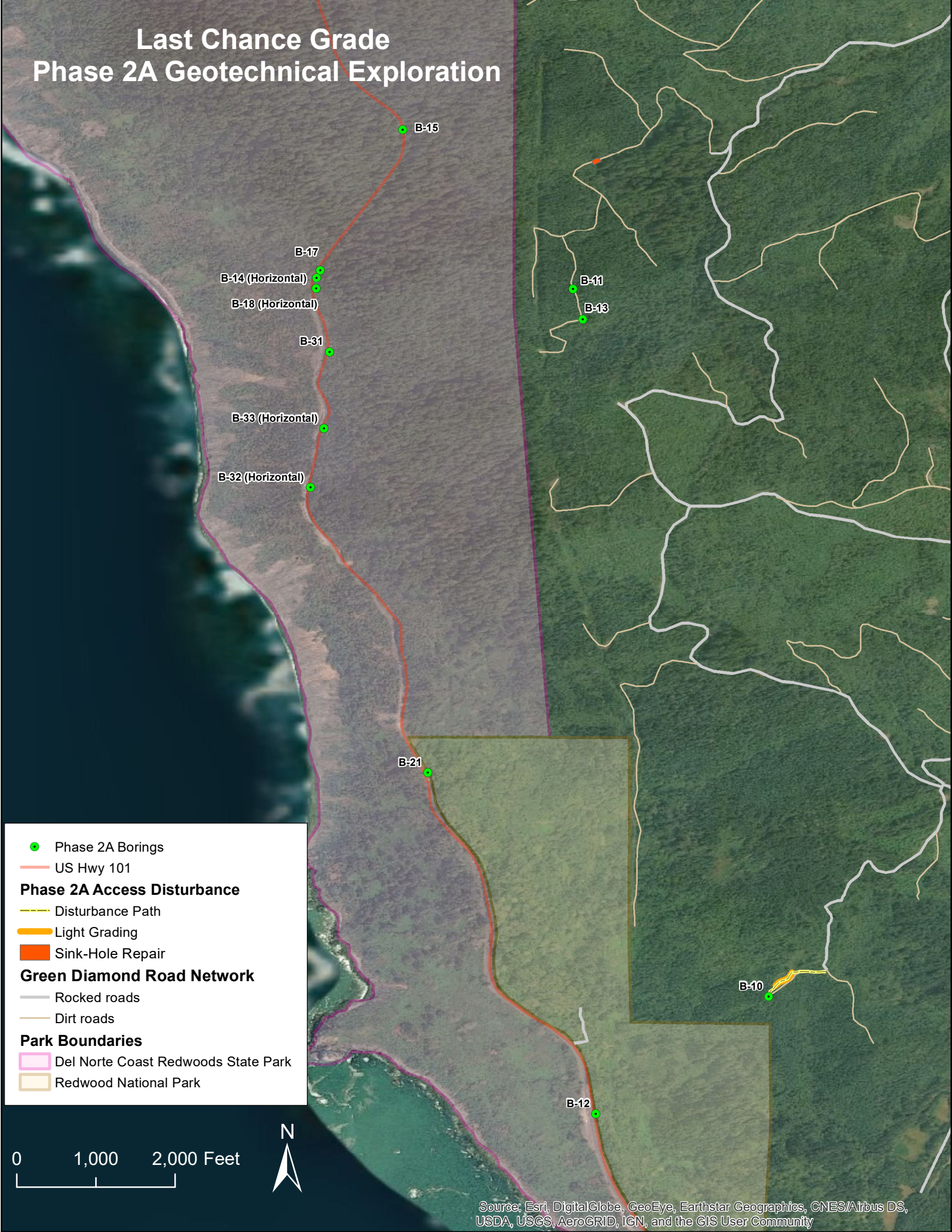


# Last Chance Grade Phase 2A Geotechnical Exploration



B-15  
B-17  
B-14 (Horizontal)  
B-18 (Horizontal)  
B-31  
B-33 (Horizontal)  
B-32 (Horizontal)

B-11  
B-13

B-21

B-10

B-12

- Phase 2A Borings
- US Hwy 101
- Phase 2A Access Disturbance**
  - Disturbance Path
  - Light Grading
  - Sink-Hole Repair
- Green Diamond Road Network**
  - Rocked roads
  - Dirt roads
- Park Boundaries**
  - Del Norte Coast Redwoods State Park
  - Redwood National Park

0 1,000 2,000 Feet

