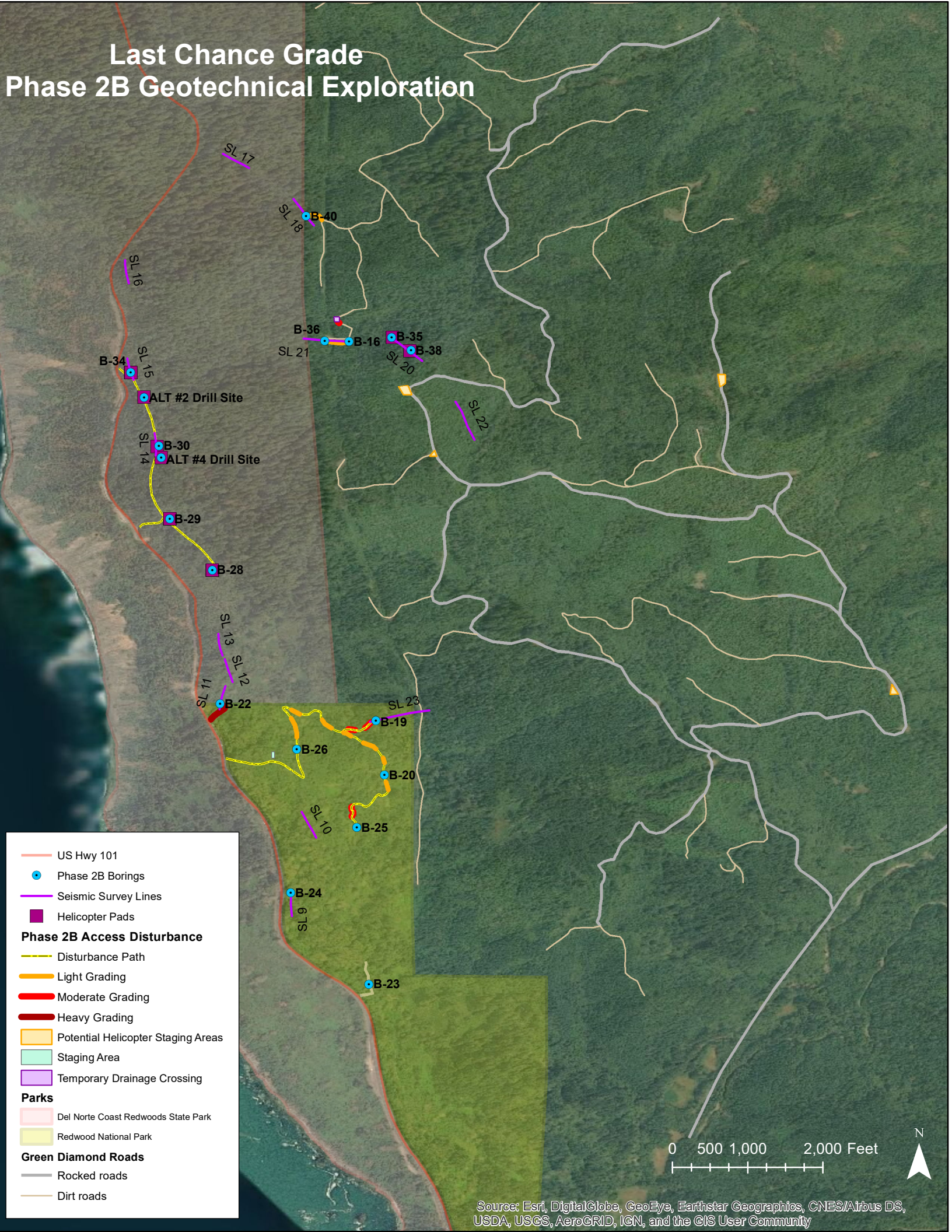
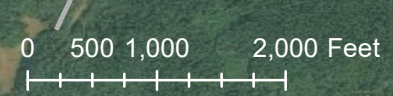


Last Chance Grade Phase 2B Geotechnical Exploration



- US Hwy 101
- Phase 2B Borings
- Seismic Survey Lines
- Helicopter Pads
- Phase 2B Access Disturbance**
- Disturbance Path
- Light Grading
- Moderate Grading
- Heavy Grading
- Potential Helicopter Staging Areas
- Staging Area
- Temporary Drainage Crossing
- Parks**
- Del Norte Coast Redwoods State Park
- Redwood National Park
- Green Diamond Roads**
- Rocked roads
- Dirt roads



Source: Esri, DigitalGlobe, GeoEye, Earthstar Geographics, CNES/Airbus DS, USDA, USGS, AeroGRID, IGN, and the GIS User Community