

LAST CHANCE GRADE



Community Open House
7/19/18



Last Chance Grade Presenters and Panel Members



State Senator
Mike McGuire



JARED HUFFMAN
US CONGRESSMAN
Serving California's 2nd District



Agenda

- Presentation
 - Project Update
 - Risk Assessment Update
- Question and Answer Period with Panel
- Open House and Additional Q&A

Outline

- Recent History
 - Process Overview
- Current Activities
 - Preliminary Geotechnical Studies
 - **Expert-based Risk Assessment**
- Next Steps
 - **Beginning Environmental**

Post Mile 15.6

Landslide Limits

- “Southern” & “Northern LCG”
- “Wilson Creek Wall”
- “Mélange Unit-Earthflow”
- “Coastal Erosion/Debris flows”

Wilson Creek Bridge
Post Mile 12.6



Two Paths to Safe, Smart, & Sustainable Solutions

Keep Road Open & Safe

- Monitor
- Maintain
- Repair - \$35M

Long-Term Solution

- \$10M Long Lead Project
 - Risk Assessment
 - Prelim Geotech
 - Environmental

Storm Damage Repairs

- 2016 and 2017 Storm Damage
- \$35M approved total (\$27M in construction costs)



Wilson Creek Wall



PM 15.0 Wall Southern Extension



PM 15.0 Wall Northern Extension



PM 15.2 Soil Nail Wall



**Pre 2016
Storm**



**Post 2017
movement**

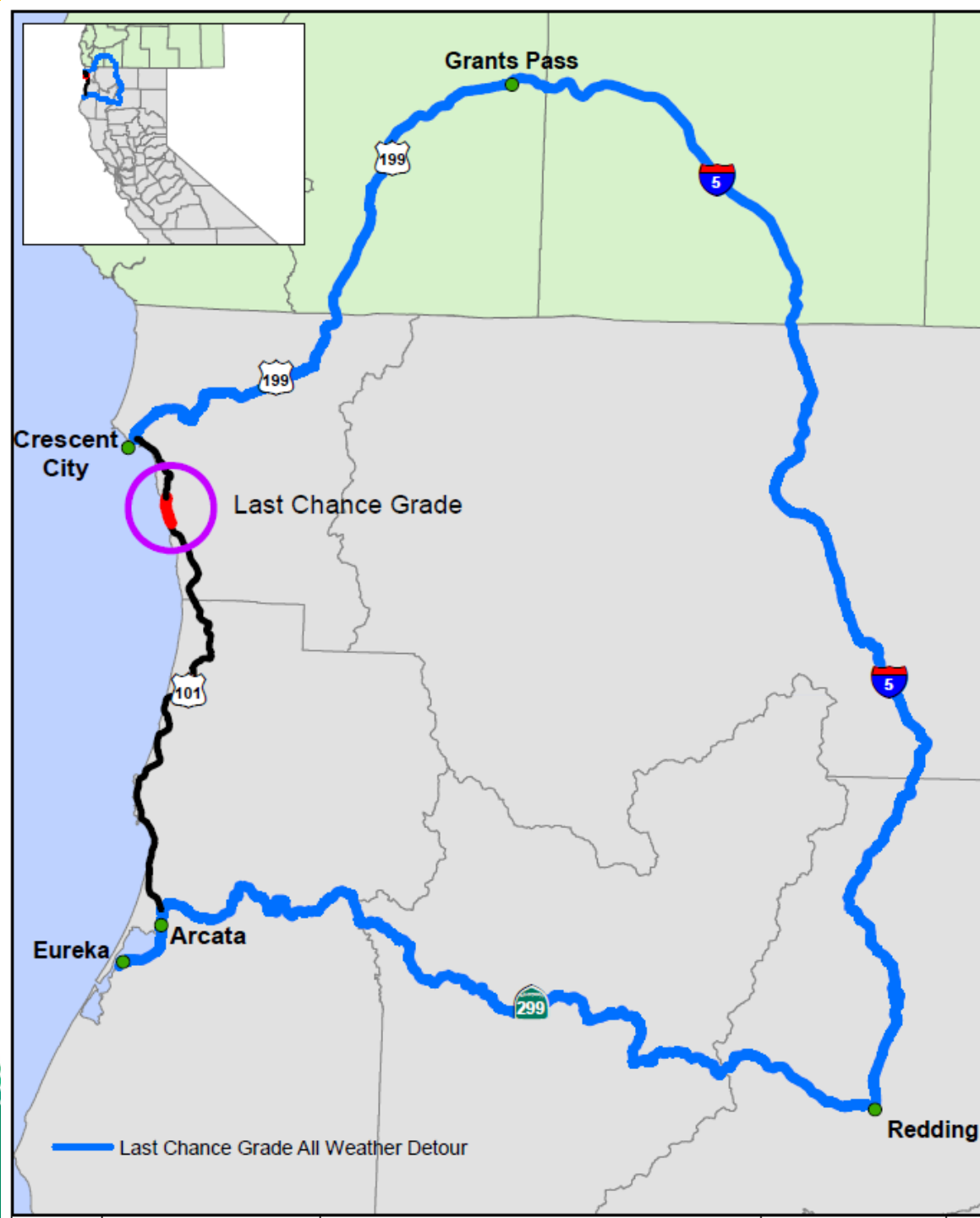


Monitoring and Safety Measures

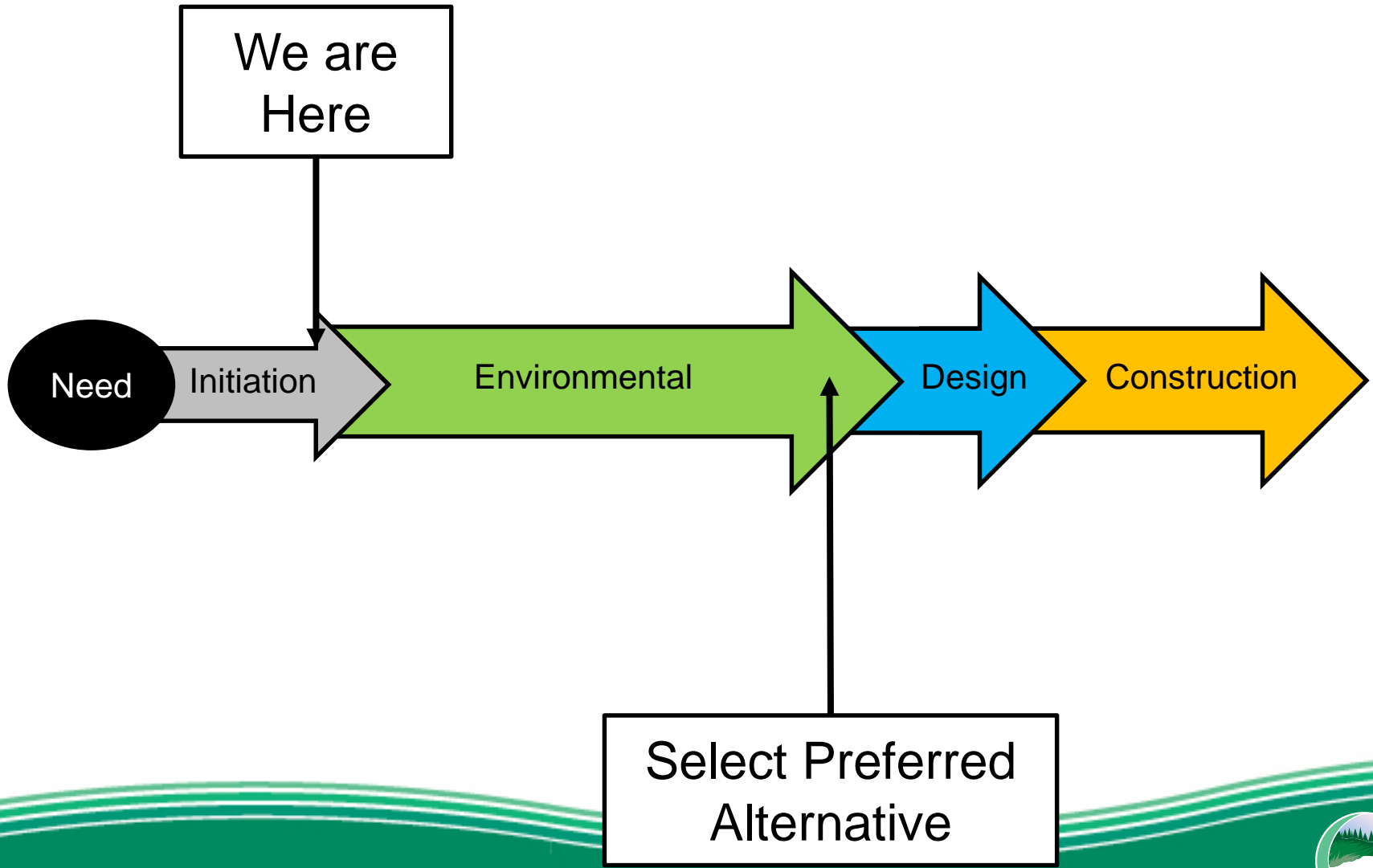
- Monitoring
 - “Boots on the Ground”
 - Near Real Time Monitoring System
 - Aerial Photography
 - Ground Surveys
- Safety
 - Public Information
 - Barriers and Rail
 - Paving and Grinding

Project Need

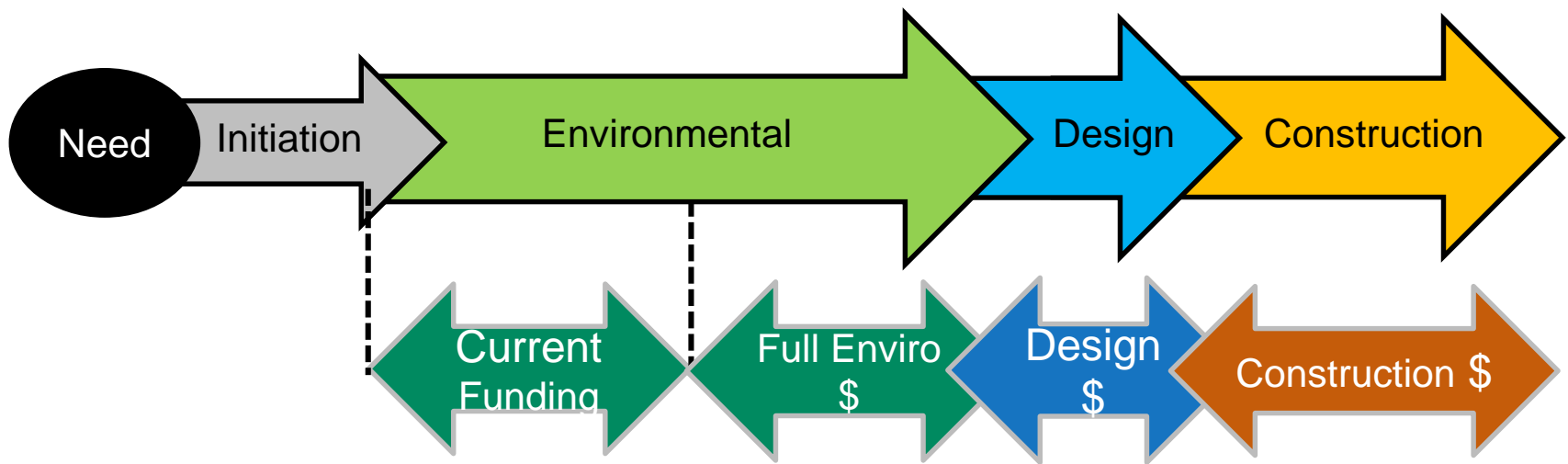
- ~\$85M in Repair Costs (Capital) since 1997
- 320 mi Detour 6 hours extra
- 1-Yr Closure Costs \$1.5B



Project Phases



Funding by Phase



Coordination and Partnerships

- Huffman Stakeholder Group
- LCG Partner Group
- Biological Working Group
 - 13 Resource Agencies
- Cultural Resources Working Group
- Elected Officials (Fed, State, and Local)
 - McGuire, Wood, Huffman, DeFazio, DN BOS, Crescent City Council, and Others

Funding and Project Development

- 2015 Feasibility Study
- 2016 Project Study Report
 - 6 Build Alternatives
- 2017 \$5M for Preliminary Geotechnical Studies
- 2018 \$5M for Environmental Studies

Risk Assessment

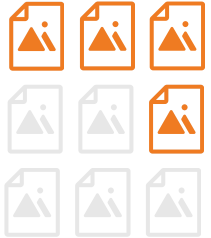
Preliminary Environmental Assessment

Preliminary Geotechnical Investigations

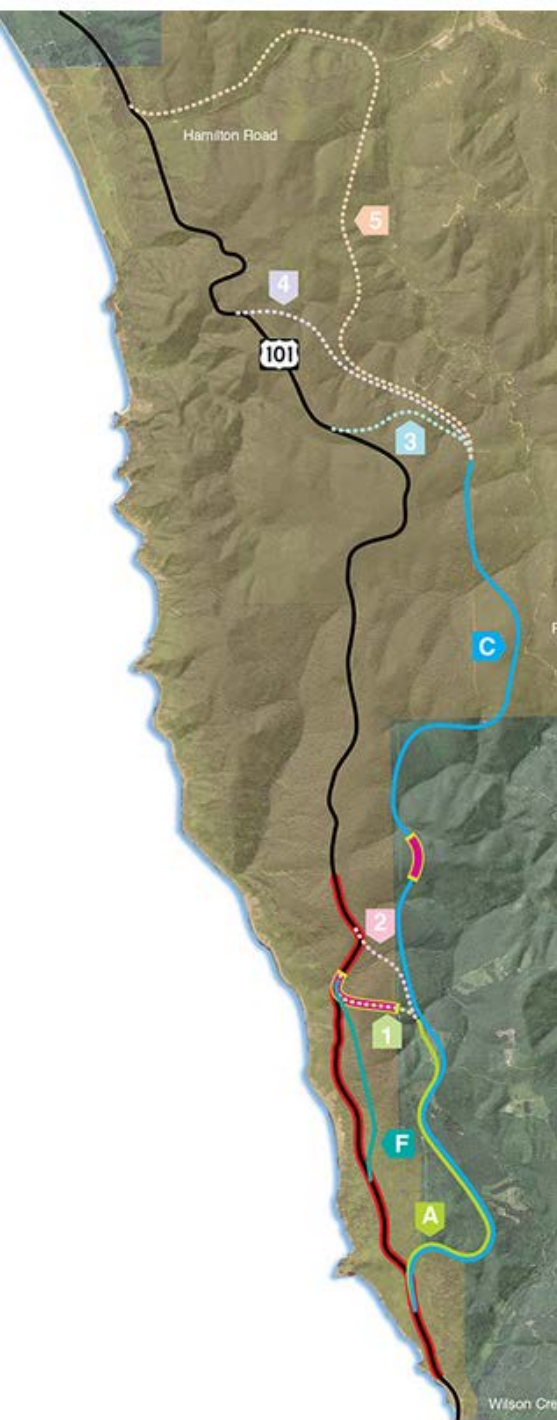
Select Alternatives

Determine Environmental Footprints

Multi-Year Environmental Studies



ALTERNATIVE ALIGNMENTS



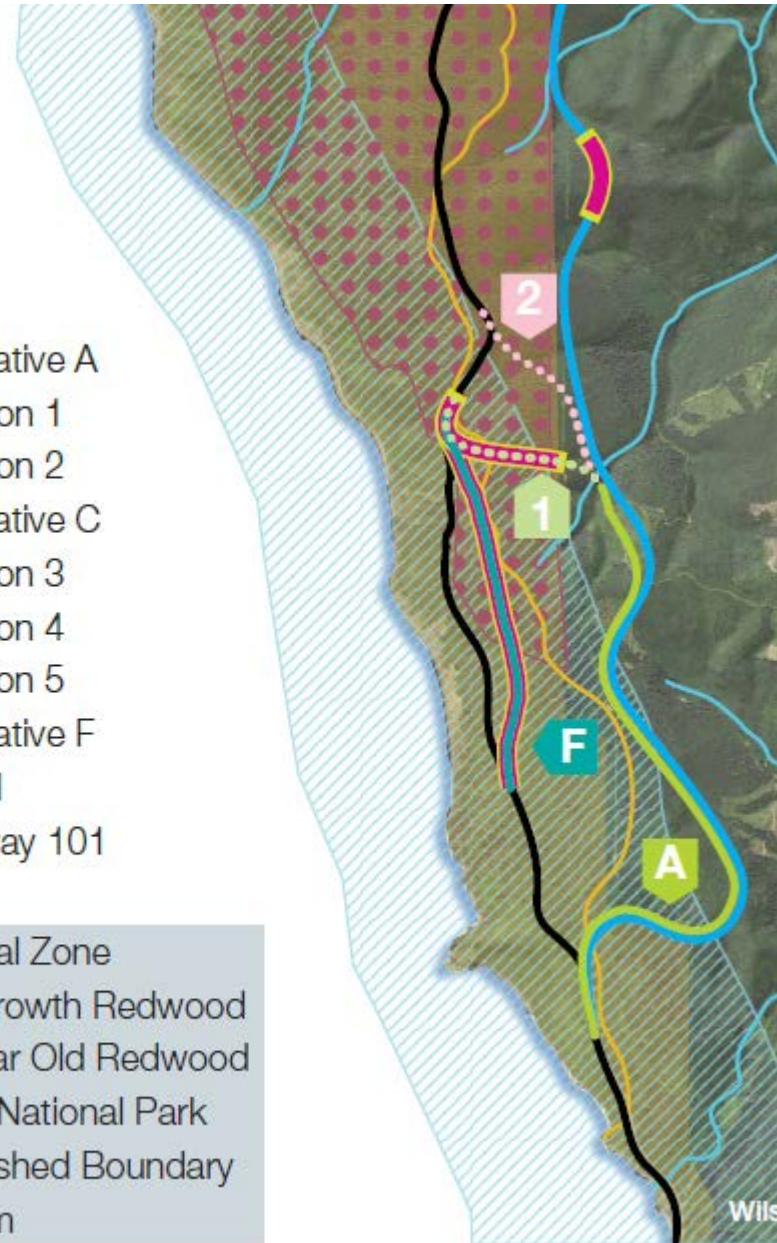
Legend

Routes

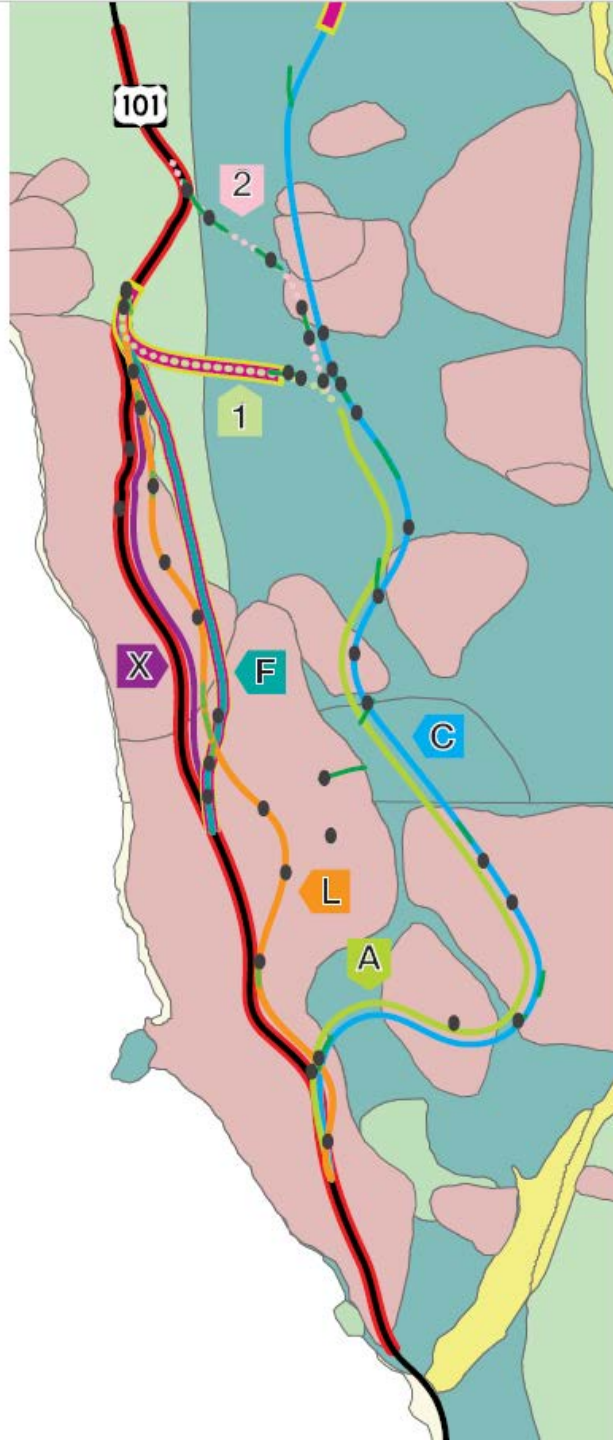
- Alternative A
- Option 1
- Option 2
- Alternative C
- Option 3
- Option 4
- Option 5
- Alternative F
- Tunnel
- Highway 101

Resources

- Coastal Zone
- Old Growth Redwood
- 90 Year Old Redwood
- State/National Park
- Watershed Boundary
- Stream



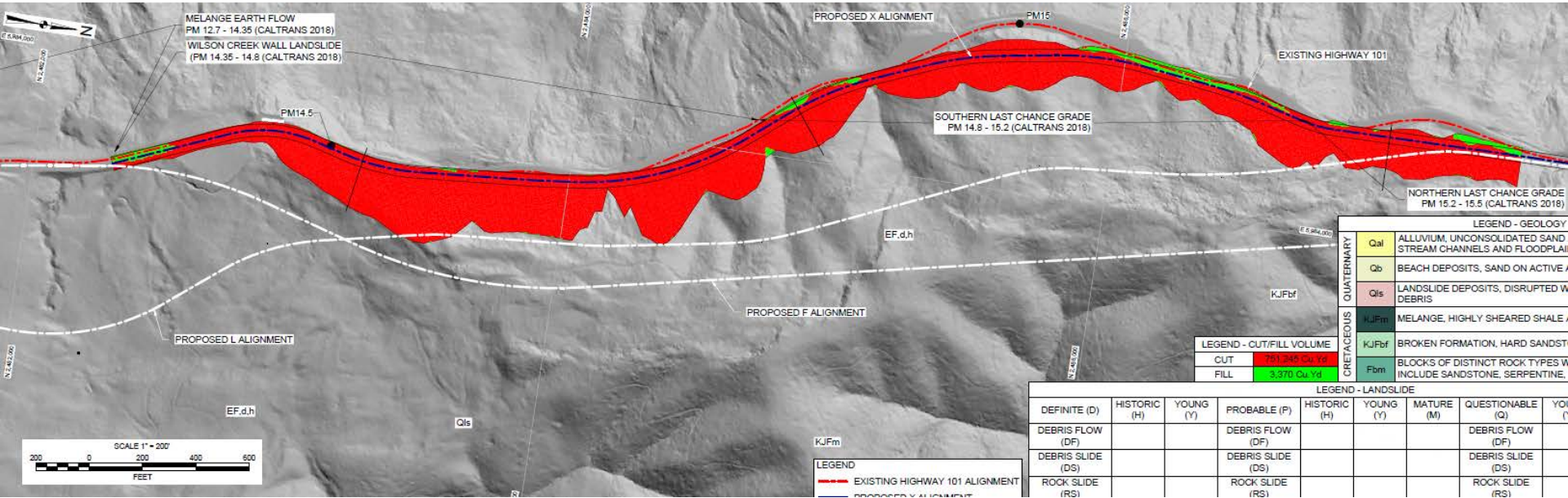
Preliminary Geotechnical Investigations



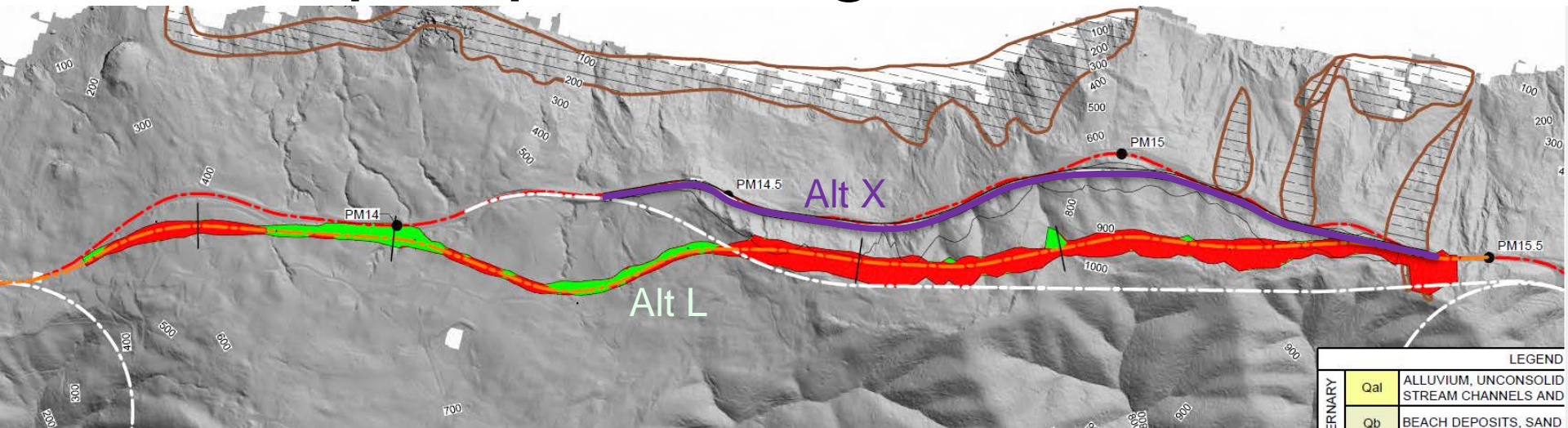
Expert Based Risk Assessment

- A Tool that Helps Narrow List of Alternatives
- Independent Panel of Geotechnical Experts
- Generated Two New Alternatives
 - Alternative X
 - Alternative L

Alt X – On Alignment Improvements



Alt L – Upslope Realignment



Next Steps

- Summer/Fall 2018 – Collaborative Scoping to Select Alternatives Using:
 - Risk Assessment
 - Preliminary Geotechnical Investigations
 - Value Analysis
- Early 2019 - Initiate Multi-Year Studies
 - Smaller List of **Reasonable** Alternatives
- Spring 2019 - Community Open House

FOR MORE INFORMATION

Website

lastchancegrade.com

Contact:

Jaime Matteoli, Project Manager

jaime.matteoli@dot.ca.gov

707-441-2097