

LAST CHANCE GRADE



Public Open House
10/18/17



Last Chance Grade Panel Members



JARED HUFFMAN
US CONGRESSMAN
Serving California's 2nd District



Agenda

- Presentation
- Question and Answer Period with Panel
- Open House and Additional Q&A

Presentation Overview

- Coordination and Partnerships
- Current and Ongoing Improvements to LCG
 - Storm Damage Work
 - Monitoring and Safety Measures
- Long-Term Solution
- Funding

Coordination and Partnerships

- Huffman Stakeholder Group
- LCG Partner Group
- Biological Working Group
- Cultural Resources Working Group
- Elected Officials (Fed, State, and Local)
 - McGuire, Wood, Huffman, DeFazio, DN BOS, Crescent City Council, and Others

Current and Ongoing Improvements

- 2016 and 2017 Storm Damage
- \$35M Total Approved for Repairs
 - \$27M in Construction Costs
- Work in Construction

Current Construction

Wilson Creek Wall

New Retaining Wall
Southern End of Last
Chance Grade



Current Construction

South Last Chance
Grade Wall Extension
New Retaining Wall Extensions
to the North and South



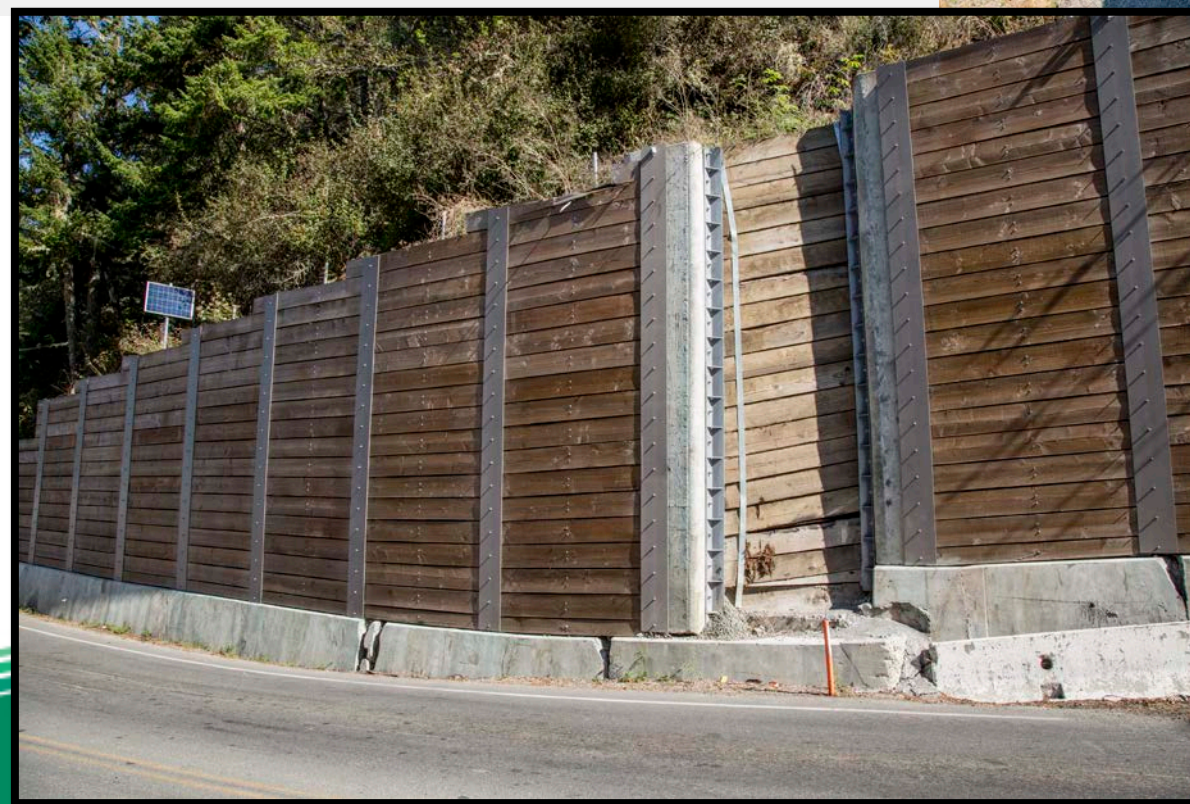
Current Construction

New Soil Nail
Retaining Wall



Future Construction

- Repair of Wall 3 (below)
- Extension of Wall 5A (right) at the Northern End of LCG



Monitoring and Safety Measures

- Monitoring
 - Boots on the Ground
 - Near Real Time Monitoring System
 - Aerial Photography
 - Ground Surveys
- Safety
 - Public Information
 - Barriers and Rail
 - Paving and Grinding

Vertical Movement Since 2012

- Wilson Creek Slide: **3 inches**
- Southern Last Chance Grade Slide: **1 foot**
- Northern Last Chance Grade Slide: **9 feet**

*Average Movement Per Year: **2 inches**

Funding and Project Development

- 2015: Huffman Group Formed
- 2015: Feasibility Study & Economic Analysis
 - Economic Analysis Now Expanded
- 2016: Project Study Report
 - 6 Build Alternatives
 - Major Environmental Issues
- 2017: \$5M for Preliminary Geotechnical Studies

Preliminary Geotech Studies

- Needed to Validate and Refine 6 Build Alternatives
- \$5M Funded in May 2017
- Status
 - Permits for Surveys in Hand
 - Surveys and Field Reconnaissance to Begin
- Accessible Areas Complete in Fall 2018.

Expert Based Risk Assessment

- A Tool that Informs and Supports Funding Decisions
- Evaluates the Geotechnical Risks to Long Term Performance (Life-Cycle Cost, Mobility, Safety)
- Independent Panel of Geotechnical Experts
- Completion Expected in February 2018

Pursuit of Full Funding

- Federal and State Funding Options
- Federal
 - Emergency Relief Program
 - Grant Programs
- State
 - Partial Funding of Environmental Work

Funding - Next Steps

- Complete Risk Assessment in Feb 2018.
- Develop a Proposal to Fund the Next Piece of the Environmental Process in July 2018.
 - Update to Project Schedule at that Time.
- Project Potentially Funded in Phases
 - Environmental
 - Design
 - Construction

FOR MORE INFORMATION

Website

lastchancegrade.com

Contact:

Jaime Matteoli, Project Manager

jaime.matteoli@dot.ca.gov

707-441-2097